

USDA - GENOMIC 12/16 PTA's

MILK: +2447G 77% Rel.
 FAT: +19G -.26%
 PROTEIN: +48G -.09%

PL +2.7 72% Rel. SCS: 2.92 74% Rel.

FB +67 FI -1.0 Livability +0.0

NET MERIT +393 74% Rel.

FM \$: 492 CM \$: +351

HA-GENOMIC 12/16 76% Rel.

PTAT: +1.72G GTPI: +2171G

Comp. UDC: +1.67G FLC: +1.13G

BD: -0.11G DF: +1.57G

HCR: +0.5 CCR: -0.5

CE: 7.1S/5.8D SB: 6.1S/6.3D DPR: -1.5

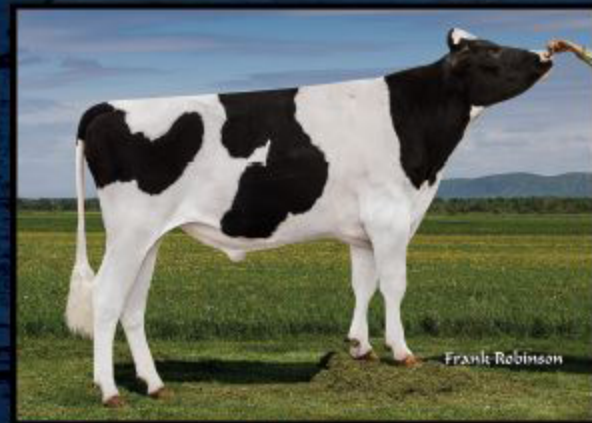
Sire: Sully Hart Meridian-ET

Dam: A-Doublestar A-Babyruth-ET

MGS: Flevo Genetics Snowman-ET

MGD: Ms Jon-Bill Bolton Alivia (VG-86)

12/16 HA-G LINEAR	STA	-2	-1	0	+1	+2
Final Score	2.55H	Low				High
Stature	1.66T	Short				Tall
Strength	0.42S	Frail				Strong
Body Depth	0.89D	Shallow				Deep
Dairy Form	1.92O	Tight Rib				Open Rib
Rump Angle	0.33S	High Pins				Sloped
Rump Width	0.38W	Narrow				Wide
RearLeg/S. View	0.75C	Straight				Curved
RearLeg/R. View	1.09S	Hock In				Straight
Foot Angle	1.20S	Low				Steep
Feet & Leg Score	1.39H	Low				High
Fore Attachment	1.78S	Loose				Strong
Rear Udder Height	2.87H	Low				High
Rear Udder Width	2.64W	Narrow				Wide
Udder Cleft	1.98S	Weak				Strong
Udder Depth	1.18S	Deep				Shallow
F. Teat Placement	0.82C	Wide				Close
R. Teat Placement	1.37C	Wide				Close
Teat Length	0.72L	Short				Long



Just a Heck of a Lot of Milk
 combined w/ great udders!!

MERIDIAN x SNOWMAN

GTPI: +2171G +2447M +19F (-.26) +48P (-.09) Type +1.72 UDC +1.67 FLC +1.13 SCS 2.92