

#2 MILK POLLED BULL AVAILABLE

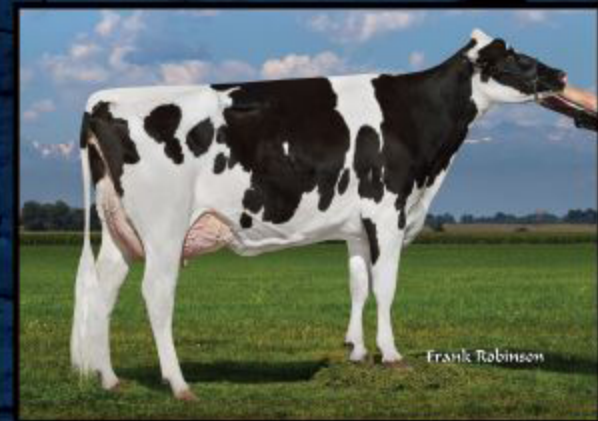
59H089 A-DOUBLESTAR PB ARIES-ET TR PC Pp

HH3 Reg# USA 143554639 DOB 10/14/2015

Dam: A-Doublestar Athena-ET

USDA - GENOMIC 12/16 PTA's
 MILK: +2318G 74% Rel.
 FAT: +31G -.21%
 PROTEIN: +60G -.03%
 PL +3.7 70% Rel. SCS: 2.9 72% Rel.
 FE +113 FI +0.7 Livability +0.9
 NET MERIT +550 71% Rel.
 F M \$: +583 C M \$: +535
 HA-GENOMIC 12/16 74% Rel.
 PTAT: +2.11G GTPI: +2396G
 Comp. UDC: +1.53G FLC: +1.18G
 BD: -0.15G DF: +1.92G
 HCR: +1.9 CCR: +0.8
 C E: 5.8S/4.6D S B: 6.3S/5.1D DPR: +0.3
 Sire: View-Home Powerball-P-ET
 Dam: A-Doublestar Athena-ET (VG-83)
 MGS: Sully Hart Meridian-ET
 MGD: A-Doublestar A-Babyruth-ET NS

12/16 HA-G LINEAR	STA	-2	-1	0	+1	+2
Final Score	3.11H	Low				High
Stature	2.13T	Short				Tall
Strength	0.41S	Frail				Strong
Body Depth	0.76D	Shallow				Deep
Dairy Form	2.61O	Tight Rib				Open Rib
Rump Angle	2.04S	High Pins				Sloped
Rump Width	0.53W	Narrow				Wide
Rear Leg/S. View	0.17S	Straight				Curved
Rear Leg/R. View	1.00S	Hock In				Straight
Foot Angle	1.12S	Low				Steep
Feet & Leg Score	1.47H	Low				High
Fore Attachment	1.47S	Loose				Strong
Rear Udder Height	2.75H	Low				High
Rear Udder Width	2.53W	Narrow				Wide
Udder Cleft	1.16S	Weak				Strong
Udder Depth	1.12S	Deep				Shallow
F. Teat Placement	1.30C	Wide				Close
R. Teat Placement	1.16C	Wide				Close
Teat Length	0.41S	Short				Long



2-00 305 3x 33.470M 3.0 1003f 3.0 1003p

GTPI: +2396G 2318M +31F (-.21) +60P (-.03) Type +3.7 UDC +1.53 FLC +1.18 SCS 2.90