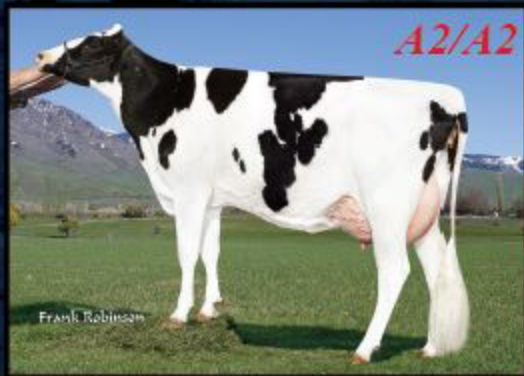


Dam: A-Doublestar
Exp Amethyst (VG-86)



Shakespeare Son X Explode
with +2.52 Type and +2.50 UDC
and No Planet

59HO84 A-DOUBLESTAR AMALDO-ET

HH3 Reg# USA 143109129 DOB 8/29/2014

USDA - GENOMIC 12/16 PTA's

MILK: +1090G 78% Rel.
FAT: +36G -.02%
PROTEIN: +32G +.00%
PL +3.6 73% Rel. SCS: 2.71 75% Rel.
FE +59 FI -0.3 Livability +0.7
NET MERIT +447 74% Rel.
F M \$: 428 C M \$: +455

HA-GENOMIC 12/16 77% Rel.
PTAT: +2.41G GTPI: +2298G

Comp. UDC: +2.44G FLC: +1.45G
BD: +2.03G DF: +2.01G
HCR: +0.8 CCR: +0.6

C E: 9.6S/5.1D S B: 7.4S/5.8D DPR: -0.9

Sire: Ladys-Manor Shakespeare-ET
Dam: A-Doublestar EXP Amethyst-ET (VG-86)
MGS: Wabash-Way Explode-ET
MGD: A-Doublestar Baxtr Anna-ET (VG-86)

12/16 HA-G LINEAR	STA	-2	-1	0	+1	+2
Final Score	3.61H	Low				High
Stature	2.98T	Short				Tall
Strength	2.00S	Frail				Strong
Body Depth	1.67D	Shallow				Deep
Dairy Form	0.94O	Tight Rib				Open Rib
Rump Angle	1.85S	High Pins				Sloped
Rump Width	1.39W	Narrow				Wide
RearLeg/S. View	0.02S	Straight				Curved
RearLeg/R. View	1.11S	Hock In				Straight
Foot Angle	2.15S	Low				Steep
Feet & Leg Score	1.47H	Low				High
Fore Attachment	3.12S	Loose				Strong
Rear Udder Height	2.52H	Low				High
Rear Udder Width	2.32W	Narrow				Wide
Udder Cleft	1.17S	Weak				Strong
Udder Depth	3.22S	Deep				Shallow
F. Teat Placement	1.01C	Wide				Close
R. Teat Placement	0.70C	Wide				Close
Teat Length	0.21S	Short				Long

GTPI: +2298G +1090M +36F (-.02) +32P (+.00) Type +2.41 UDC +2.44 FLC +1.45 SCS 2.71